

Wednesday HW Key

NAME

0

DATE

PERIOD

0%

20 40 60 80 100 120 140 160 180 200

Unit 3, Lesson 14: Solving Percentage Problems

1. For each problem, explain or show your reasoning.

a. 160 is what percentage of 40? 400% because 40×4 is 160.

b. 40 is 160% of what number? 25

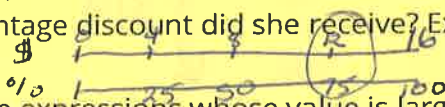
S's or think $40 = 8 \times 5$ count by 25 $\square \times 4 = 100$

c. What number is 40% of 160? 10% of 160 is 16 so $4 \times 16 = 64$

2. A store is having a 20%-off sale on all merchandise. If Mai buys one item and saves \$13, what was the original price of her purchase? Explain or show your reasoning.

\$13 saved = 20%, 20% is $\frac{1}{5}$ so \times by 5 = \$65

3. The original price of a scarf was \$16. During a store-closing sale, a shopper saved \$12 on the scarf. What percentage discount did she receive? Explain or show your reasoning.



4. Select **all** the expressions whose value is larger than 100.

A. 120% of 100 120

B. 50% of 150

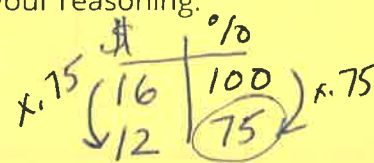
C. 150% of 50

D. 20% of 800 $\frac{1}{5}$ of 800 = 160

E. 200% of 30

F. 500% of 400 Every 100% is 400 so 500% is $400 \times 5 = 2000$

G. 1% of 1,000



5. An ant travels at a constant rate of 30 cm every 2 minutes.

(cm)	time (min)
30	2

a. At what pace does the ant travel per centimeter? $\frac{2 \text{ min}}{30 \text{ cm}}$ $\frac{1}{15}$ min per cm ≈ 0.066 min per cm

b. At what speed does the ant travel per minute? $\frac{30}{2 \text{ min}}$ 15 cm per min

(from Unit 3, Lesson 8)

NAME _____

DATE _____

PERIOD _____

6. Is $3\frac{1}{2}$ cups more or less than 1 liter? Explain or show your reasoning. (Note: 1 cup \approx 236.6 milliliters)

$$3\frac{1}{2} \text{ cups} \times 236.6 \text{ mL per cup} = 828.1 \text{ mL}$$

1 liter has 1000 mL so 1 liter is more

(from Unit 3, Lesson 4)

7. Name a unit of measurement that is about the same size as each object.

- a. The distance of a doorknob from the floor is about 1 meter or yard
- b. The thickness of a fingernail is about 1 mm millimeter
- c. The volume of a drop of honey is about 1 mL milliliter
- d. The weight or mass of a pineapple is about 1 pound or kilogram
- e. The thickness of a picture book is about 1 centimeter or in
- f. The weight or mass of a buffalo is about 1 ton
- g. The volume of a flower vase is about 1 cup, quart, liter
- h. The weight or mass of 20 staples is about 1 gram
- i. The volume of a melon is about 1 gallon or quart or liter
- j. The length of a piece of printer paper is about 1 foot

(from Unit 3, Lesson 2)